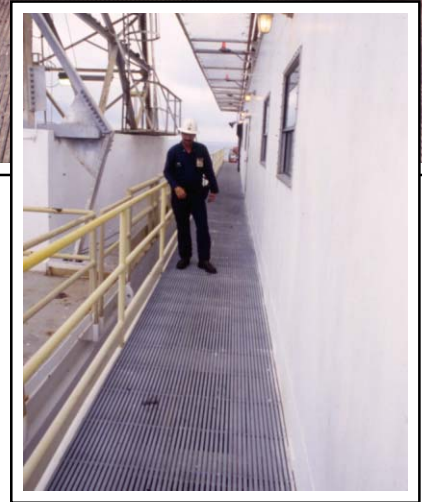
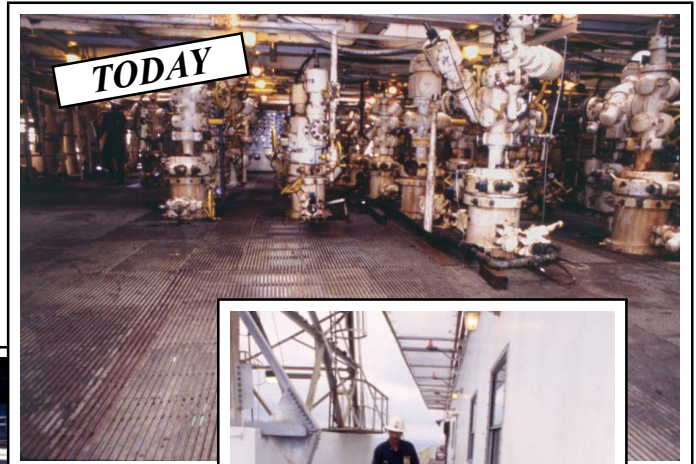
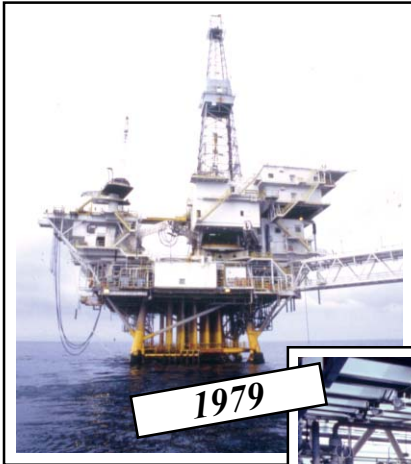


STRONGWELL

APPLICATION PROFILE



20 YEARS OFFSHORE PROVES DURADEK® DURABILITY

In 1979, DURADEK® grating was installed on Shell Offshore's *Ellen* platform that was destined for the Beta Field offshore Southern California. Now approaching its 20th anniversary, the nearly 10,000 square feet of grating continues to show an excellent return on the original investment. (*Ellen* is now operated by Aera Energy LLC, a joint venture by Shell Oil and Mobil Oil.)

Platform foreman, Steve Hollada, has been working on the platform for 16 years and claims the real test for grating is when the drillers come to work-over the wells. Abuse from SSV's (surface safety valves) and performing acid jobs have not been a problem.

DURADEK® has always been known for its baked-on anti-slip durability and the 20 year exposure on *Ellen* has held up well. Accidental sandblasting and paint overspray has not degraded the anti-slip finish.

Comments regarding better slip resistance, especially when wet, and improved worker comfort (less fatigue and better kneeling) continue to be heard. These are the same comments now heard from the large deepwater projects in the Gulf of Mexico nearly 20 years later. Bill Jones, Process Supervisor, said the grating was easy to work on — very comfortable.

Too often, an industry concentrates on short term costs. Now during a period of low oil prices, the long term decision to go with DURADEK® has proved to be a better return on investment.

TECHNICAL DATA

Product:	Fiberglass Well Bay Platform
Process:	Pultrusion
Materials:	DURADEK® fiberglass reinforced grating, color gray
Sizes:	I-4000 1" grating and stairtreads
User:	Ellen Offshore Platform Aera Energy LLC (formerly Shell Oil Co.)



STRONGWELL
Chatfield Division
1610 Highway 52 South
Chatfield, MN 55923-9799 USA
(507)867-3479, FAX (507)867-4031
www.strongwell.com