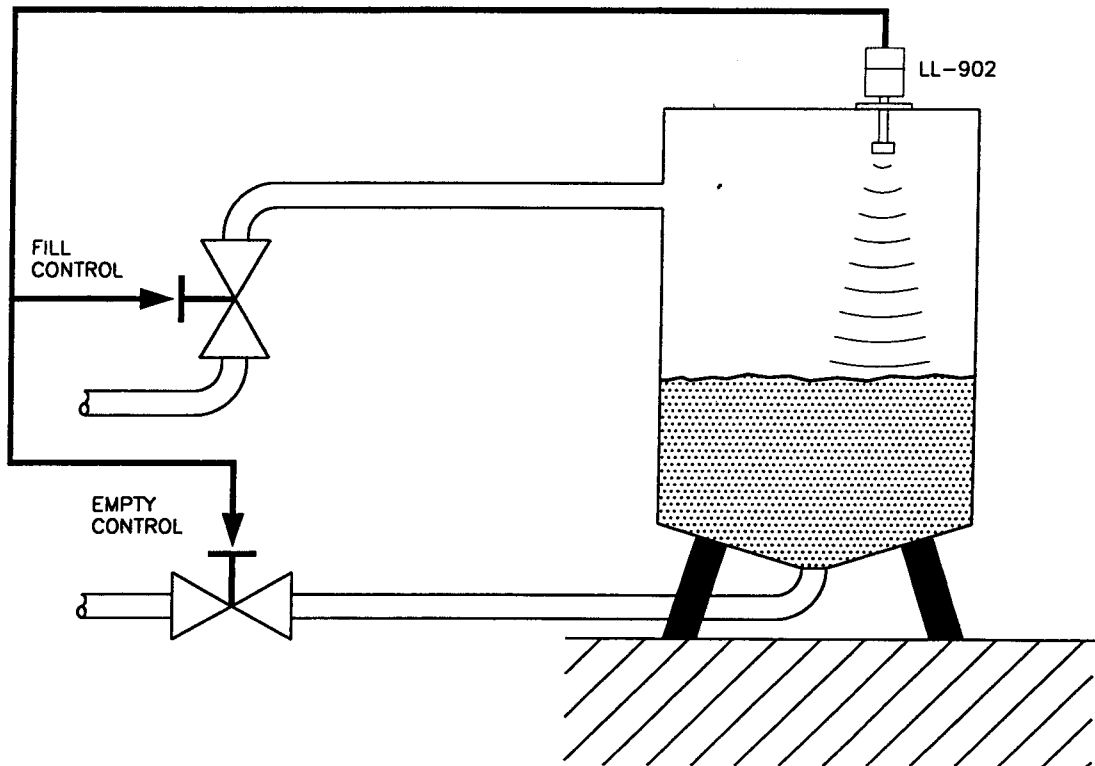




**NON-CONTACT POINT LEVEL CONTROL
IN BAKERIES**



PROBLEM: A BAKING MANUFACTURER TRYING TO MEASURE LEVELS OF MOLASSES, CORN SYRUP AND PEANUT OIL IN STAINLESS STEEL TANKS WAS HAVING COATING PROBLEMS WITH HIS ORIGINAL POINT LEVEL CONTROLS. THE TANKS ARE BASIC STAINLESS STEEL TYPE USED IN THE FOOD INDUSTRY, WHICH ARE HALF WAY HEATED BY STEAM. TEMPERATURES IN THE TANKS ARE 100°F AND THERE ARE NO MIXERS OR PADDLES INVOLVED. THEY REQUIRED A NON-FOULING TWO POINT CONTROL WITH HIGH POINT BEING FAIL-SAFE HIGH, TO PREVENT TANK OVERFLOW IN CASE OF POWER FAILURE.

SOLUTION: A COSENSE LL-902 NON-CONTACT DUAL POINT LEVEL SWITCH WAS INSTALLED ON TOP OF THE TANK WITH THE SENSOR FACING DOWN. OUTPUT OF RELAY CONTACT ARE DIRECTLY CONNECTED TO THE FILL AND EMPTY VALVE WHICH CONTROLS THE BATCHES IN THE TANK. THE MANUFACTURER NOW ENJOYS A METHOD OF DETECTING HIGH AND LOW LEVELS OF HIS PROCESS LIQUIDS AS WELL AS HIGH LEVEL FAIL-SAFE OPERATION, WITHOUT ANY COATING PROBLEMS TO AFFECT THE MEASUREMENT.