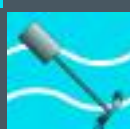
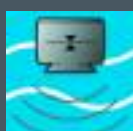
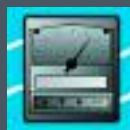
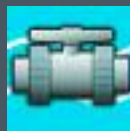


# Products For Fluid Handling Applications



## Corrosion Resistant & Ultrapure Fluid Flow Products & Services

- **Tubing, Hose, Fittings & Assemblies**
- **Pipe, Valves, & Fittings**
- **Pumps, Filters, & Process Controls**
- **Tanks, Level Control, Heaters & Mixers**
- **Structural Shapes & Grating**

**1-800-848-1141**  
[www.ryanherco.com](http://www.ryanherco.com)

**PVC • CPVC • POLYPRO • PVDF • POLYETHYLENE • TEFLON • SS • FRP • ECTFE**

# SUPPLY CHAIN SPECIALISTS FOR FLUID FLOW SYSTEMS...

### FLEXIBLE TUBING, HOSE, HOSE FITTINGS & ACCESSORIES

Braid-reinforced tubing  
Compression fittings  
Crimp fittings  
Hose clamps & O-clips  
Insert fittings  
Nylon tubing  
Pneumatic fittings  
Polyethylene & Polypro tubing  
Polyurethane tubing  
Push connect fittings  
Quick disconnects  
Sanitary assemblies  
Silicone tubing  
Stainless Steel compression fittings  
Stainless Steel tubing  
Suction & delivery hose  
Teflon tubing (PFA, FEP, PTFE)  
Tubing valves & accessories  
Tygon tubing  
Vinyl tubing

### PIPE & FITTINGS

Clear PVC  
Compressed air piping systems  
Corrosion resistant pipe & fittings  
Fuseal2 secondary containment  
Fuseal 25/50 PVDF acid waste  
Fuseal Polypro acid waste  
Hi-purity piping systems, Sygef, Proseal, LXT  
Labwaste  
Plastic pipe hangers, channel frame, strut  
Process pipe  
PVC / DWV  
Schedule 40 PVC & CPVC  
Schedule 80 PVC & CPVC  
Secondary containment pipe & fittings  
Tools, cement, Teflon tape  
Ultra high-purity Stainless Steel 316L

### VALVES

Actuated  
Ball check  
Ball: true & single union, MIP, compact  
Butterfly  
Diaphragm & diaphragm check  
Gate/globe  
Needle & labcock  
Pressure relief & regulators  
Solenoid  
Stainless Steel valves  
Swing check/spring check  
Three-way ball & multiport

### ROTAMETERS

Acrylic tube  
Armored  
Glass tube  
High-purity  
In-line  
Industrial  
Panel mount  
Polysulfone tube

### INSTRUMENTATION & CONTROLS

Controllers, monitors, transmitters  
Electroless nickel controllers  
Flow sensors: turbine, vortex, ultrasonic,  
magnetic, electro-optical, ultrapure  
Gauges  
Instrument panels  
Microetch copper controllers  
pH/ORP, conductivity/resistivity, salinity,  
dissolved oxygen, chlorine, ozone  
pH sensors  
Pressure and temperature  
Recorders  
Rotor flow indicators  
Temperature controls & monitors  
Temperature sensors & switches

### PUMPS

Air-operated double-diaphragm (AOD)  
Booster pumps  
Centrifugal  
Chemical  
Drum & barrel  
Flexible impeller  
Gear  
High pressure  
Hose pumps  
Magnetic driven  
Metering  
Peristaltic tubing  
Progressive cavity  
Stainless steel  
Vertical

### FILTRATION

ASME vessels  
Bag Filters  
Basket & Y-strainers  
Carbon treatment  
Filter elements  
Filter housings  
Pump filter systems  
Stainless Steel pressure vessels

### LEVEL CONTROL

Continuous point sensors & controllers  
Float switches  
Level transmitters  
Magnetostrictive  
Optic sensors  
RF capacitance sensors  
Ultrasonic sensors

### HEATERS

Electric immersion heaters  
Heat exchangers  
In-line heaters  
Temperature controls

### TANKS

Custom-fabrication in all plastic materials  
Environmental containment  
Secondary containment tanks & vessels  
Seismic-rated tanks  
Stainless Steel  
Storage tanks: vertical & horizontal  
Tank adapters (bulkhead fittings)  
Tank stands

### MIXERS

Chemical injectors  
Drum mixers  
Gear drive mixers  
Static mixers  
Tank mixers  
Teflon mixers  
Turbo mixers

### SPECIALIZED SYSTEMS

Acid waste pump stations  
Custom chemical metering systems  
Neutralization tanks  
Process control equipment  
Pump control panels  
Waste treatment modules

### SHEET, GRATING, BAR, PUL- TRUSIONS, SHAPES, WELDERS, FASTENERS

Flat sheet stock  
Fiberglass grating, stair tread, strut  
Fiberglass pultruded structural shapes &  
panels  
Hot air welding equipment  
Plastic nuts, bolts, washers, hangers  
Rectangular bar stock  
Round bar  
Welding rod

### FUME DUCTING & BLOWERS

Corrosion-resistant industrial fans  
Duct & fittings  
Flexible duct  
Lab blowers

### Locations Nationwide

- Albuquerque NM
- Anaheim CA
- Austin TX
- Burbank CA
- Chicago IL
- Charlotte NC
- Cleveland OH
- Colorado Springs CO
- Grand Prairie TX
- Houston TX
- Orlando FL
- Philadelphia PA
- Portland OR
- Richmond VA
- Sacramento CA
- Salt Lake City UT
- San Diego CA
- San Jose CA
- Seattle WA
- South Plainfield NJ
- Tempe AZ

# RYAN HERCO STOCKS THESE BRAND-NAME MANUFACTURERS & MORE...

PVC • CPVC • POLYPRO • PVDF • POLYETHYLENE • TEFLON • SS • FRP • ECTFE

## TUBING SYSTEMS

- Acutech
- Astipure
- Banjo
- BarbLock
- Chemplast
- Colder Products Corp.
- Dixon
- Eldon James
- Flexaust
- Flexible Components
- Ham-Let
- I/R ARO
- Jaco
- John Guest
- Kanaflex
- Kuriyama
- Nycoil
- OPW / Civacon
- Parker Hannifin
- Saint-Gobain (Norton//Furon/Tygon)
- Thogus

## PIPING SYSTEMS

- Asahi/America
- Certainteed
- Charlotte
- Chemtrol (Nibco)
- Dura
- Esilon (IPEX)
- George Fischer +GF+
- +GF+ SYGEF Plus HP
- +GF+ Sloane / Fuseal
- +GF+ Sloane / Proseal
- Harvel
- IPS
- Micromold
- Plastinetics
- Spears
- Thermoplastic Processes

## ACTUATION

- Asahi/ America
- Furon
- George Fischer
- Ham-Let
- Hayward
- Nibco
- Spears
- Plast-O-Matic
- RK Industries

## WASTE DRAINAGE & SECONDARY CONTAINMENT

- Asahi DuoPro
- Asahi Poly-Flo
- +GF+ Sloane Containlt
- +GF+ Sloane Fuseal 25/50 PVDF Acid Waste
- +GF+ Sloane Fuseal Polypro Acid Waste
- Sloane Fuseal2 Secondary Containment
- Spears Labwaste

## FLOW CONTROL

- Asahi/America
- Banjo
- Chem Flowtronics
- Chemtrol (Nibco)
- Excalibur
- Flo Control
- George Fischer +GF+
- +GF+ Sloane
- Hayward
- I/R ARO
- Koflo
- Marquest
- Mazzei
- Orion
- Plast-O-Matic
- RK Industries
- Spears
- Techno (PCC)
- WIKA

## ROTAMETERS

- Blue White
- Dwyer
- George Fischer
- Hedland
- King Instruments

## INSTRUMENTATION

- Blue White
- Extetch
- Flowline
- Fuji
- Gems
- Great Plains
- Hanna Instruments
- Hedland
- Mountain Energy

- Sensorex
- Signet
- Sparling/Oval
- MacMillan Company
- Myron L
- Rosemount/Unilco
- Walchem
- WIKA
- Yokogawa

## PUMPING SYSTEMS

- ARO-MAG
- Barnant (Masterflex)
- Blue White
- Dosmatic
- Gorman Rupp
- I/R ARO
- ITT Jabsco / Flojet
- LMI
- Lutz
- March
- Micropump
- Multi Duty
- Pacer
- Price
- Pulsafeeder
- Robbins & Meyer
- Serfilco
- Stenner
- Walchem
- Warren Rupp
- Webster
- Webtrol

## FILTRATION

- Claris
- Delta Pure
- Filtercor
- Filterite
- Harmsco
- Hayward
- Modufilter
- Pacer
- Pall
- Ron-vik
- Pentair (Plymouth Products, Ametek)

## LEVEL CONTROL

- Bindicator/Genelco
- Compac Engineering
- Flowline
- Gems

- Madison
- Scientific Technologies
- Signet
- WIKA

## HEATERS

- George Fischer +GF+
- Lufran
- Process Technology

## TANKS & SPILL CONTAINMENT

- Chemtainer
- Clawson
- Raven
- Ronco
- Saint-Gobain
- Snyder
- TEA
- Terracon
- Ultra Tech

## MIXERS

- Chem Flowtronics
- Koflo
- Komax
- Lutz
- Mazzei
- Neptune

## SPECIALIZED SYSTEMS

- Chemical Metering Systems
- Custom Process Control Panels
- Instrument Enclosures
- Neutralization Tanks
- Pump Lift Stations
- Waste Neutralization Modules
- Wastech

## STRUCTURAL SHAPES / GRATING

- American Grating
- Empire
- Enduro
- Gehr
- Harvel
- HPG
- Kamweld
- Poly Hi/Solidur
- Strongwell
- Wegener



GEORGE FISCHER +GF+

PLAST-O-MATIC VALVES, INC.



SAINT-GOBAIN PERFORMANCE PLASTICS



FLOWLINE



HAYWARD

WARREN RUPP



I/R ARO

Lutz

SNIYDER-CROWN INDUSTRIAL PRODUCTS

Chemtrol

WALCHEM Sensors, Pumps, Controls

WIKAI



Blue-White Industries



Colder Products Company



1-800-848-1141

www.ryanherco.com

